

SCHOOL OF ARCHITECTURE OKLAHOMA STATE UNIVERSITY



The vision of the School of Architecture is to empower students to make creative contributions in the cause of architecture.



Hey kids!

I bet you enjoy drawing and making things as much as I do. Inside this journal is a selection of activities to allow you to have some fun while exploring your creativity!

Every day my students imagine, draw and build models of their design ideas. We would love to have you come visit us in Stillwater to see our student creations! Maybe one day you will even come to the OSU School of Architecture to study architecture or architectural engineering- I hope so. The most important things to do until then are to draw, draw, draw, to keep studying math and science, and to read stories to develop your imagination!

Have fun learning about architecture,

Professor Bilbeisi

Suzanne Bilbeisi, AIA

Centennial Professor of Architecture and
Head of the School of Architecture

Email: suzanne.bilbeisi@okstate.edu

Website: <https://arch-ceat.okstate.edu>

Facebook: Oklahoma State University School of Architecture

Instagram: @OkStateArch

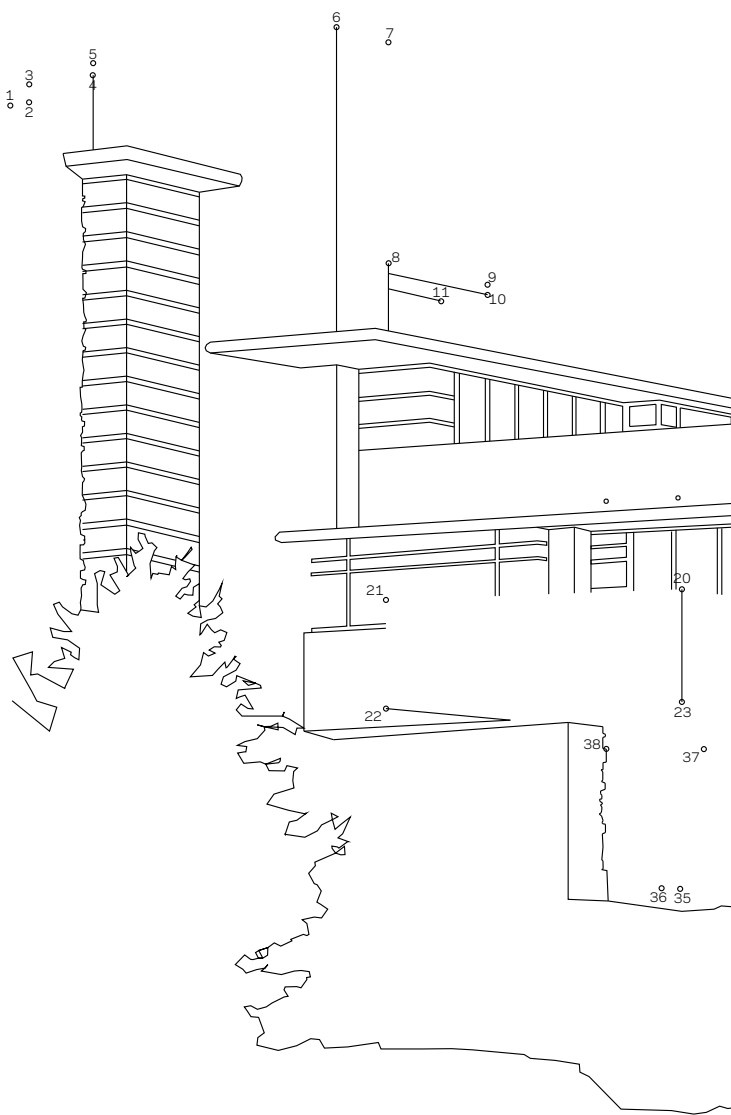
Twitter: @OkStateArch

Complete the sketch!

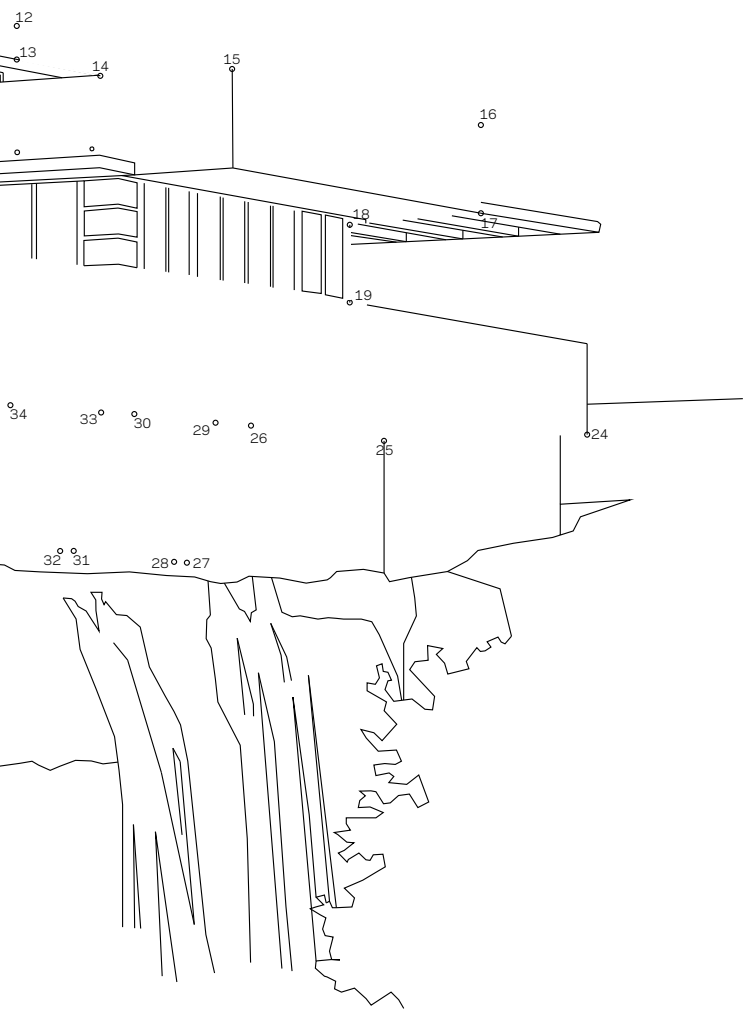


Free Sketch

Connect the Dots



▲ Fallingwater, Frank Lloyd Wright, Mill Run, PA, 1937



AQUEDUCT - an artificial channel for moving water

ARCADE - a series of arches supported by piers or columns

ARCH - curved span to support a wall above an opening

AXIS - a principal line of development, movement, direction, symmetry, etc.

BALCONY - a railed, elevated platform projecting from the wall of a building

BUTTRESS - external prop or support built to steady a structure by opposing its outward thrusts

CANTILEVER - a long projecting beam or girder supported at only one end

COLUMN - an upright pillar, typically cylindrical, supporting loads above

CORNICE - any prominent, continuous, horizontally projecting feature at the top of a wall

DOME - a spherical roof or ceiling, inherently structural

FACADE - the exterior face of a building

FRIEZE - a decorative band on the entablature beneath the cornice

GABLE - the triangular portion of a wall between the edges of a pitched roof

GARGOYLE - a carved human or animal figure projecting from a building, typically acting as a spout

GAZEBO - a roofed structure that offers an open view of the surrounding area

IGLOO - a type of dome-shaped shelter built from blocks of solid snow

KEystone - a central stone at the top of an arch, locking the whole together

PARAPET - a low protective wall along the edge of a roof, bridge, or balcony

PERGOLA - an archway in a garden or park typically constructed of wood

SPIRE - a tapering conical or pyramidal structure on the top of a building

STAIRS - a set of steps leading from one floor of a building to another

STEEPLE - a spire on the top of a church tower or roof

TOWER - a tall, narrow building, either freestanding or forming part of a building

TRUSS - a structural framework made up of horizontal members and diagonal bracing

TURRET - a small tower on top of a larger tower or at the corner of a building or wall, typically of a castle

Word Search

A R C A D E K I R S F G M T L U T W E A
S N T T L M E N E T Q T A R E C N L K Z
P R B B R Y Y B V O F E Y R U P P H T C
O Q I H A I S W E W Z R Z D G E A U V L
U B I A J G T F L E M R E F E O U R P Q
J D P V T J O E I R I U O T K P Y C A A
I G L O O S N M T Z Q T S C E F F L I P
A O H O H T E O N A B U T T R E S S E B
L A Y S Z C Q D A A B Z X I V H P L A O
O O B E Z A G S C H U V E F E R B L G Z
G A X J F R E J P H C Z Q D A A C N I F
R X K Q I B Q C U I E R O Z G O Y B N A
E C W U J C U H A F R T A E N T S P M C
P L J F Z I O C E X J E S Y R J S D E A
B P U K V W H L F S I X A U U M P I S D
E C I N R O C W U A E Y S D I F G F L E
E U O V D S W C Y M P S I P B O T P J E
J J L C L W Z N M M N N B L X L B N O A
W T B A M G Y K K M S F W S D S G C S B
N P J U K H S V G Z B U R C A I Z Q I W

AQUEDUCT
ARCADE
ARCH
AXIS
BALCONY
BUTTRESS

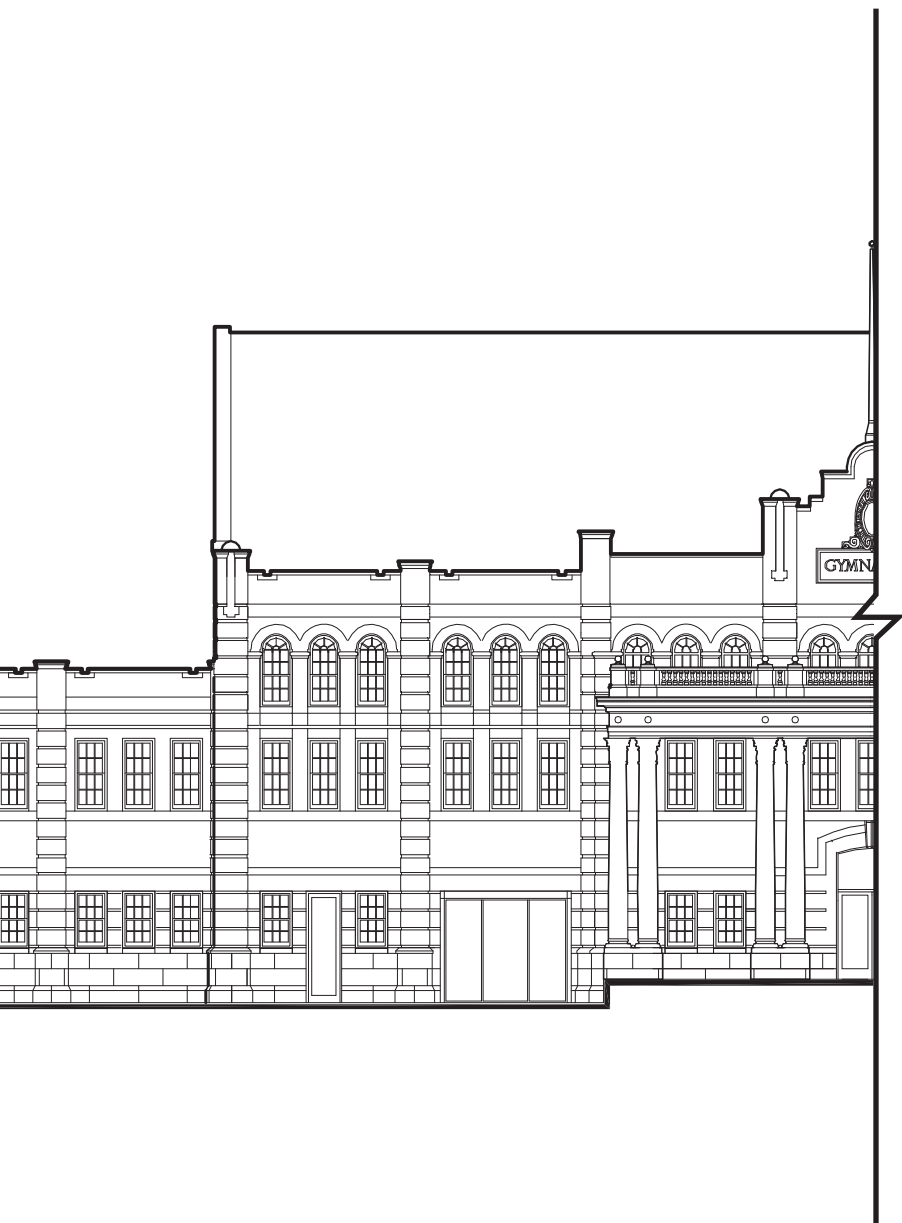
CANTILEVER
COLUMN
CORNICE
DOME
FACADE
FRIEZE
GABLE

GARGOYLE
GAZEBO
IGLOO
KEYSTONE
PARAPET
PERGOLA

SPIRE
STAIRS
STEEPLE
TOWER
TRUSS
TURRET

Coloring Page





Hold this page up to a mirror to reveal the symmetry of the building!

How to Draw: Scale Figures

Step 1



Draw an M for the torso

Step 2



Draw a W for the legs

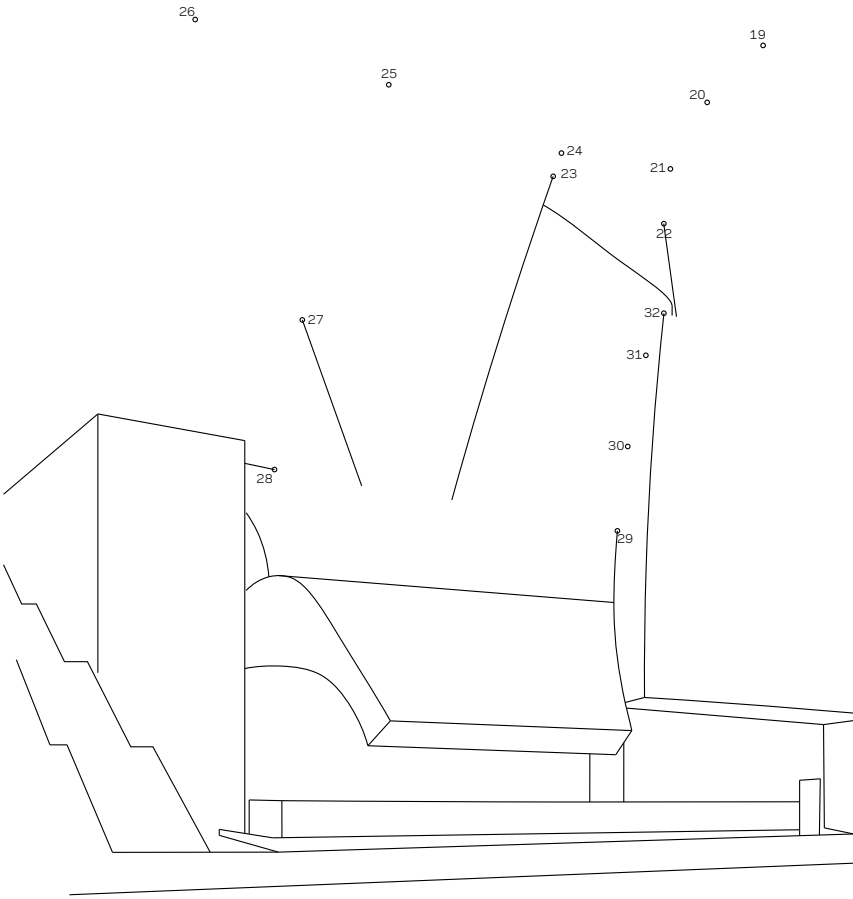
Step 3



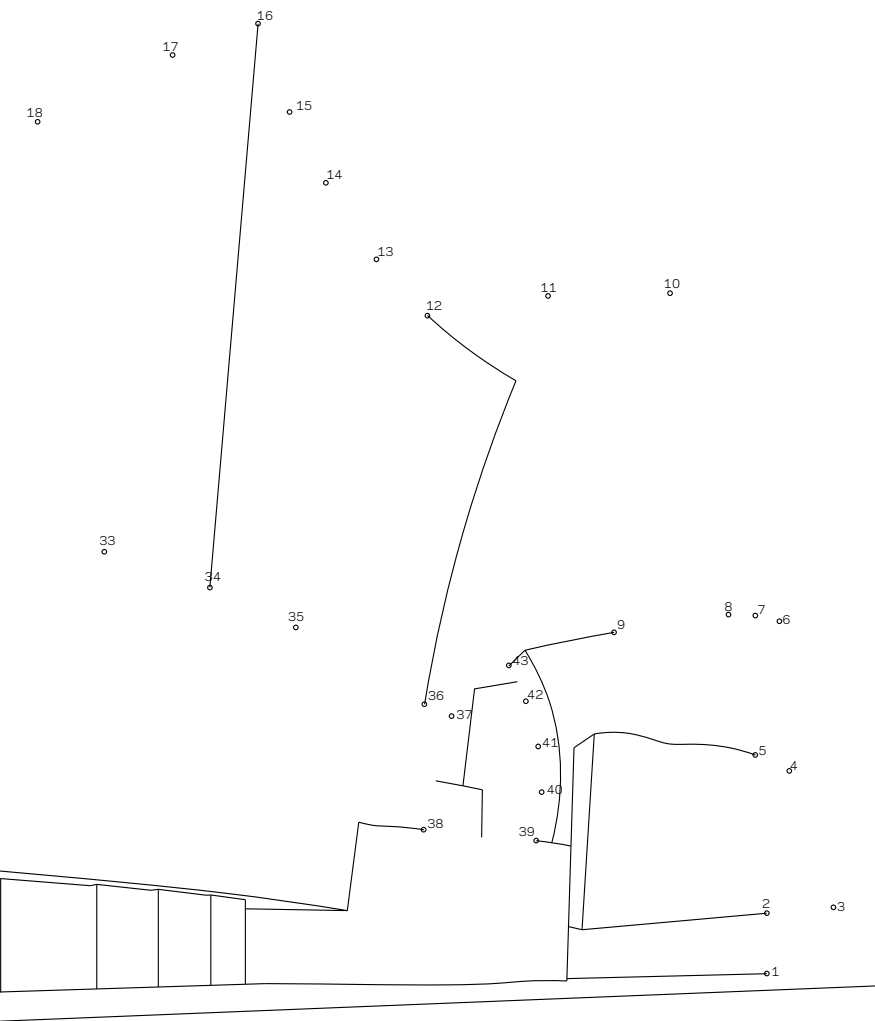
Add the head and feet!

Practice Here

Connect the Dots



▲ Disney Concert Hall, Frank Gehry, Los Angeles, CA, 2003

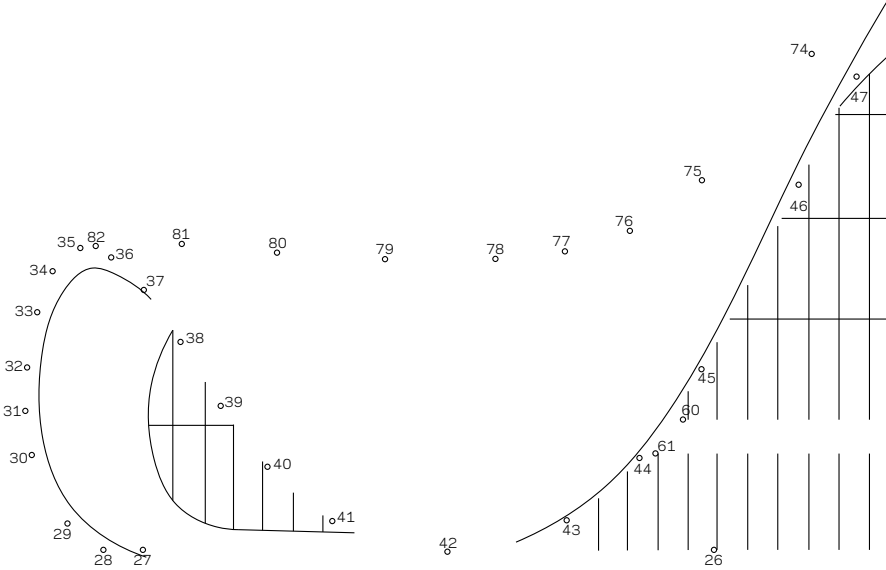


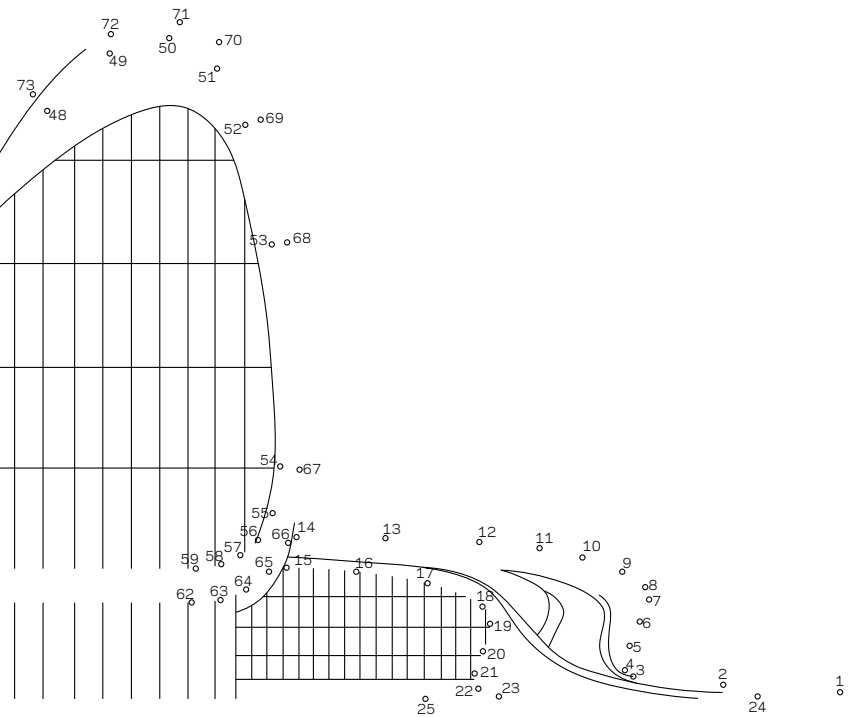
Spot the Differences



▲ calculator, Steel book, fountain pen, scissors, lamp, notebooks, mug, sucker

Connect the Dots





Wordsearch Key:

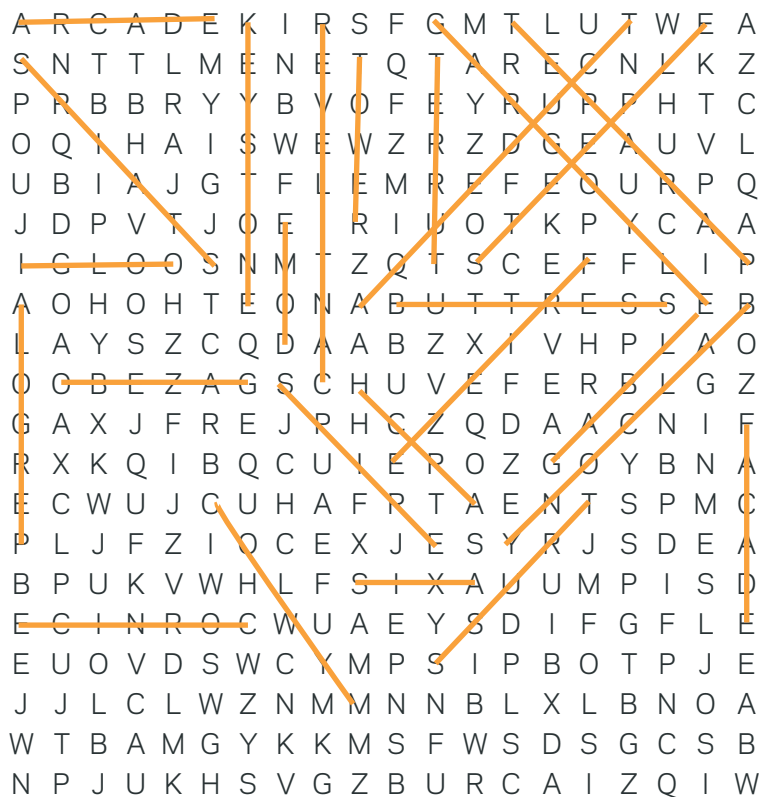


Image Credits

Page 1: Don Wheeler for OSU

Page 2: Phil Shockley for OSU

Booklet designed and published by Suzanne Bilbeisi, Keith Peiffer, and Chandler Brown at the Oklahoma State University School of Architecture.

Printed on Mohawk Natural White 25% Cotton Strahmore.. Bound at the Oklahoma State University School of Architecture. Original content authors retain copyright of their creative work.

©2020 The Oklahoma State University
School of Architecture (v04.06.20)



SCHOOL OF ARCHITECTURE
College of Engineering, Architecture and Technology